

In a
league
of its own

DX-G - Computed Radiography from Agfa HealthCare:
Supporting a complete range of General Radiography applications



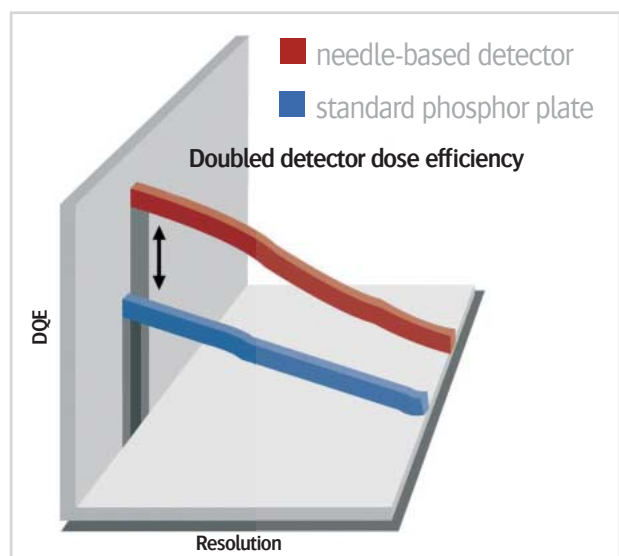
Superior image quality

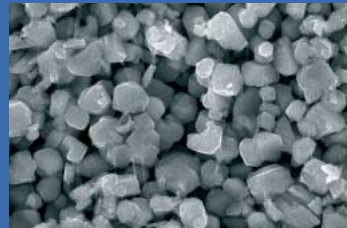
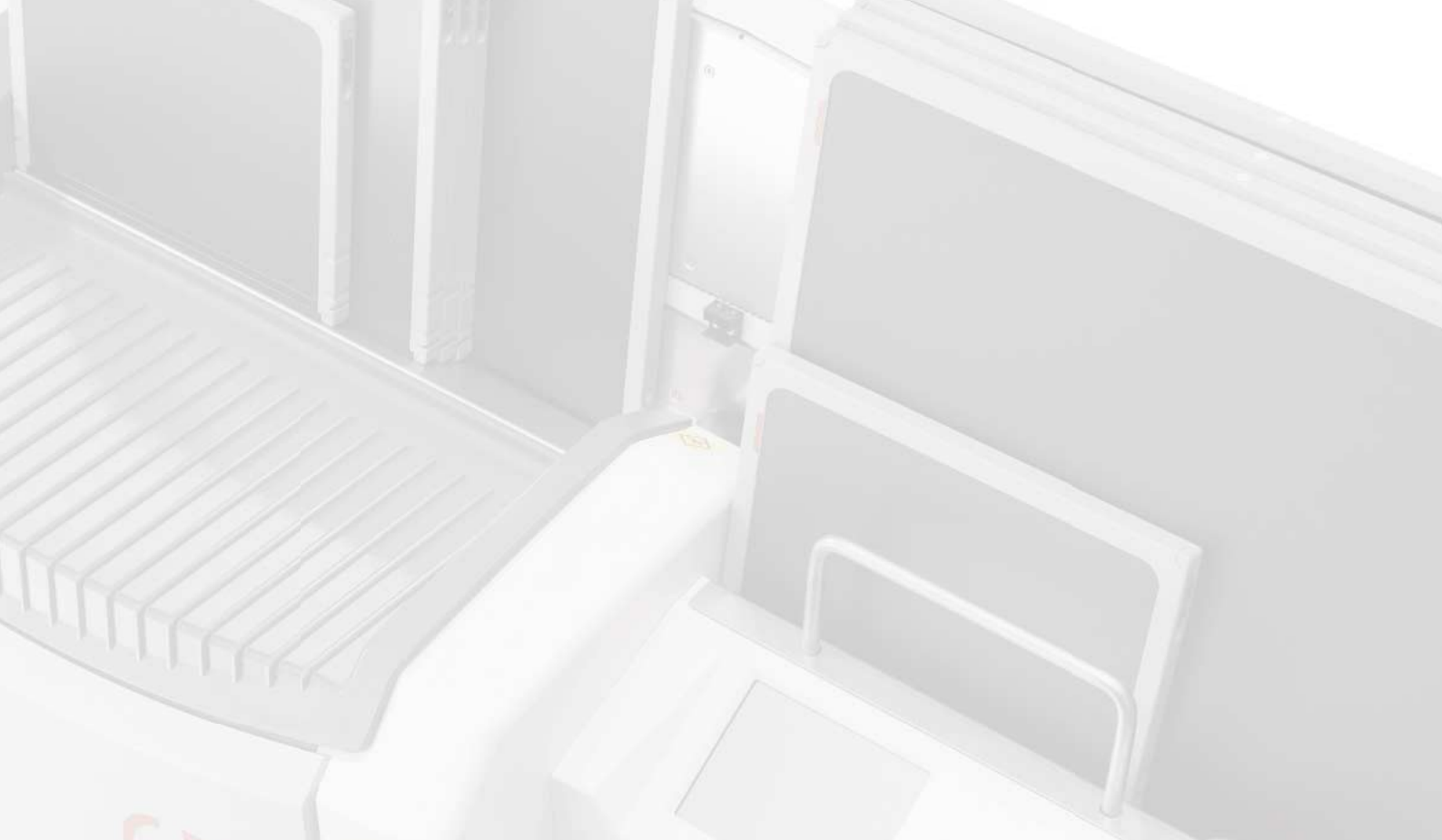
enables a reduction of X-ray dose

When you are reviewing your CR solution, or making the transition from analog to digital, the technologically advanced DX-G from Agfa HealthCare is the only solution that allows you to use standard phosphor plates and needle-based detectors and has the potential for dose reduction for all studies - particularly neonatology and pediatrics, where dose reduction is crucial.

It combines superior image quality with high throughput, delivered by a unique five cassette drop-and-go buffer, and a very fast preview. And it's all housed in a compact system comprising the top features of already proven Agfa HealthCare CR systems.

DX-G is, quite simply, in a league of its own.





Standard phosphor plate



Needle-based detector

Supports both standard phosphor plates and needle-based detectors

A first in the world of General Radiography CR, the DX-G supports both needle-based detectors and standard phosphor plates. The needle-based detectors with their higher Detective Quantum Efficiency [DQE] offer a combination of high image quality and the potential for reduction in a patient's X-ray dose.

Harnesses the power of MUSICA² and NX Workstation

At the heart of the DX-G lies Agfa HealthCare's intuitive NX workstation with the gold standard image software, MUSICA² - the latest intelligent and automated image processing software for consistently reliable, high quality image visualization and the potential for dose reduction. Exam independent, MUSICA² automatically analyzes the characteristics of each image and optimizes processing parameters - independent of user input and dose deviations. The result is minimal re- or post-processing is required.

Places you closer to your patient

In pediatrics and beyond, the DX-G's cassette-based workflow makes it both effective and efficient. The cassettes allow easy positioning of your patient - a major advantage when working with children - and make the system ideal for portable applications, such as in neonatal intensive care.

MUSICA² Neonatal Processing is optimized for the generally more difficult conditions of examining premature and full-term newborn babies. Even with the low doses appropriate for neonatal exams, or when using portable X-ray units, this processing provides optimal visualization of both lung and abdominal areas in a single image, while maintaining the required focus on bone structures.

High image quality. Low dose potential. Fast workflow. DX-G - in a league of its own.

Maximizing production

across all General Radiography applications

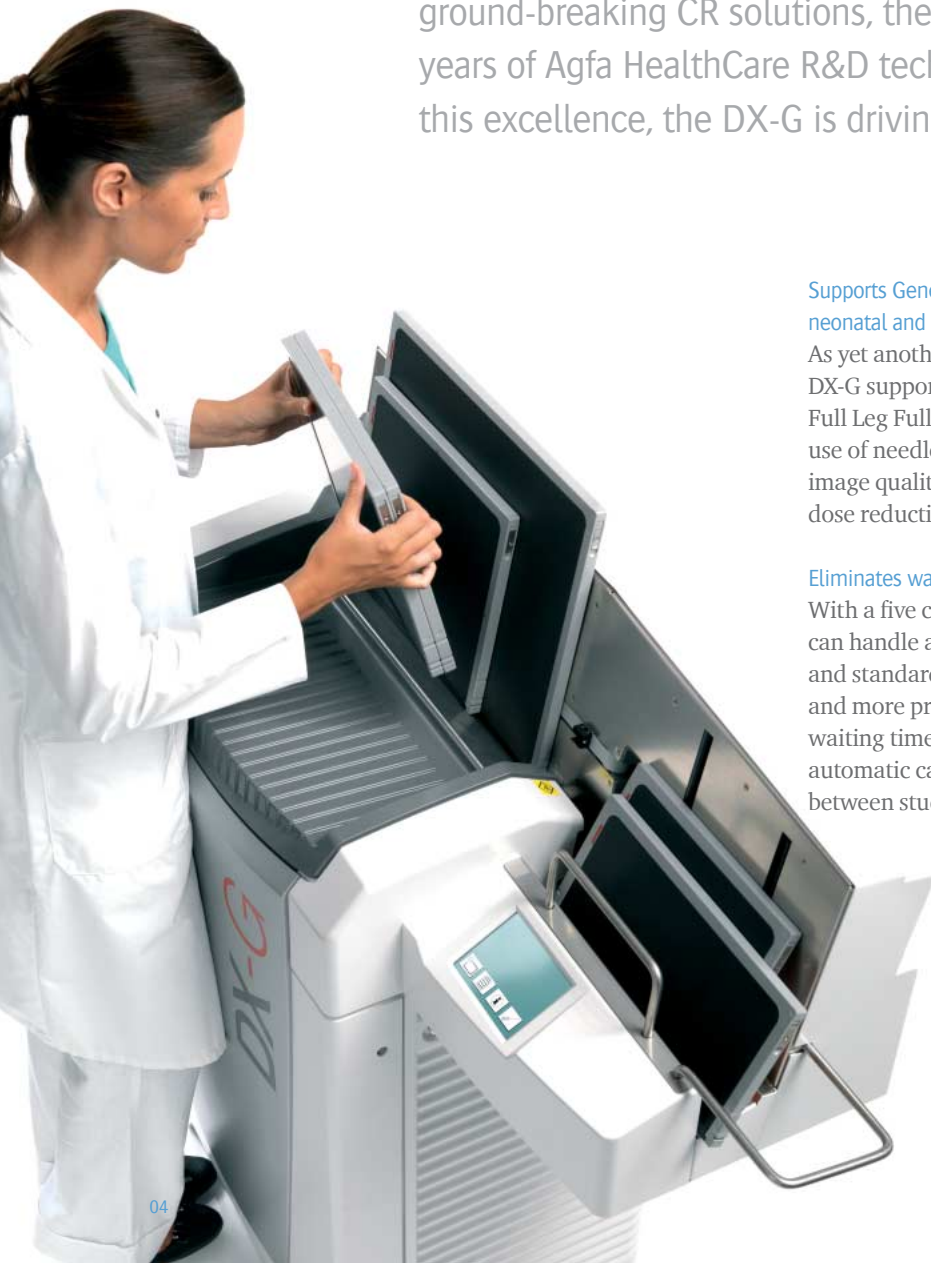
Comprising the very best components from already proven ground-breaking CR solutions, the DX-G is the culmination of years of Agfa HealthCare R&D technologies. By building upon this excellence, the DX-G is driving the future of CR imaging.

Supports General Radiology, including Full Leg Full Spine, extremities, neonatal and pediatric applications

As yet another Agfa HealthCare innovation in imaging, the DX-G supports all General Radiology applications, including Full Leg Full Spine, extremities, neonatal and pediatrics. Its use of needle-based detectors provides the highest possible image quality while offering the potential for significant dose reduction.

Eliminates waiting times and allows for a continuous workflow

With a five cassette input and five cassette output buffer, DX-G can handle a mix of different sizes of needle-based detector and standard phosphor plates, making workflow smoother and more productive. The drop-and-go buffer eliminates waiting time and allows continuous workflow, while automatic cassette handling and the ability to switch easily between studies makes DX-G highly productive and user friendly.



ivity



Facilitates high speed throughput

In addition to the drop-and-go buffer and continuous workflow, DX-G provides high speed throughput. The fast preview facility on the examination window of the NX workstation starts shortly after a cassette is dropped into the buffer and allows correct positioning and exposure to be determined even while the final image is in the process of being completed.

Ideal workflow for Full Leg Full Spine application

The DX-G offers a highly efficient Full Leg Full Spine capability. In the CR Full Body Cassette Holder and CR Easylift, three cassettes are exposed simultaneously. After exposure, all three are dropped together into the buffer of the DX-G. On the NX Full Leg Full Spine, the images are automatically assembled, and misalignments corrected, with minimum manual interaction.

Suitable for the most space-restricted environments

With space at a premium in any healthcare facility, the DX-G's 51cm depth makes it suitable for even the most space restricted environments. Requiring no dedicated area, its footprint allows it to be placed easily in any X-ray room where it can be slotted into the smallest of spaces. Its network capability

makes it ideal for supporting single or multiple X-ray rooms - facilitating both centralized and decentralized workflow.

Facilitates a seamlessly networked integrated digital workflow

The DX-G and NX workstations are just two of Agfa's broad portfolio of solution components. Designed to enable you to achieve a seamlessly networked integrated digital workflow - from patient registration on the RIS to final display of softcopy or hardcopy images - the DX-G uses well defined DICOM protocols for all steps in the digital workflow.

Services & Support

Agfa HealthCare offers service agreement solutions tailored to the individual customer's situation. The service agreements are available in Basic, Comfort and Advanced levels, making lifecycle costs predictable. A worldwide team of some 1000 service professionals is at your disposal to provide support at all phases of your project. As an additional service, they can help you customize your examination tree or link RIS protocol codes, for an even higher return on investment. Furthermore, this team carries out tasks that go well beyond maintenance, including value added services such as super user training, staff training and software upgrades.

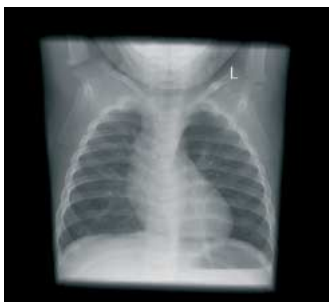
High image quality. Low dose potential. Fast workflow. DX-G - in a league of its own.



the benefit

- Superb image quality and potential for dose reduction
- Supports General Radiology, including Full Leg Full Spine, extremities, neonatal and pediatric applications
- Optimizes cassette-based workflow with drop-and-go buffer
- High throughput and fast preview of images
- Small footprint ideal for space restricted environments
- Optimal workflow for Full Leg Full Spine
- DICOM connectivity and integration

fits



High image quality. Low dose potential. Fast workflow. DX-G - in a league of its own.

Why AGFA?

Agfa HealthCare is a global leader in the fast growing market of integrated IT and imaging systems, offering healthcare facilities a seamless flow of information and a 360° view of patient care. The company has a unique, holistic approach, enabling it to provide in-depth clinical know-how and fully integrated hospital-wide solutions. The DX-G provides high image quality and potential for dose reduction for those studies where dose reduction is crucial.

www.agfa.com/healthcare

Agfa and the Agfa rhombus are trademarks of Agfa-Gevaert N.V., Belgium, or its affiliates. MUSICA is a trademark of Agfa HealthCare NV, Belgium. All other trademarks are held by their respective owners and are used in an editorial fashion with no intention of infringement. The data in this publication are for illustration purposes only and do not necessarily represent standards or specifications, which must be met by Agfa HealthCare. All information contained herein is intended for guidance purposes only, and characteristics of the products and services described in this publication can be changed at any time without notice. Products and services may not be available for your local area. Please contact your local sales representative for availability information. Agfa HealthCare diligently strives to provide as accurate information as possible, but shall not be responsible for any typographical error.

© 2011 Agfa HealthCare NV

All rights reserved

Printed in Belgium

Published by Agfa HealthCare NV

B-2640 Mortsel – Belgium

50C7M GB 00201106